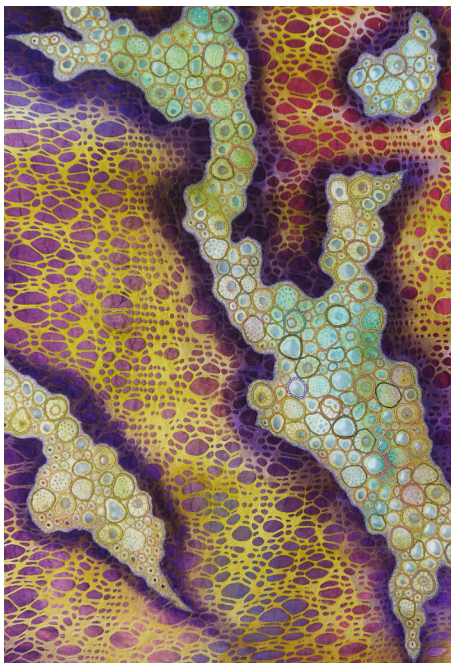


# VISITING ARTIST WORKSHOP

presented by Betty Busby



JULY 12 - 14, 2018

9 AM TO 5 PM

AGES 16 AND UP | FEE: \$200

Participants will explore new techniques for producing surface design on fabric during this three-day workshop. The \$200 fee includes materials and supplies. Enrollment is limited to 18, so register online to reserve your spot.

REGISTER ONLINE AT  
[museum.okstate.edu/layeredvoices](http://museum.okstate.edu/layeredvoices)

The workshop is offered in conjunction with *Layered Voices*, on view at the OSU Museum of Art from May 1 – Aug. 18, 2018. It showcases textiles by 23 artists, illustrating various ways that each artist interprets the concept of layers.



## ABOUT THE ARTIST

Betty Busby founded a custom ceramic tile manufacturing firm in Los Angeles after graduating from the Rhode Island School of Design with a ceramics degree. After nearly 20 years of running the firm, she sold the business in 1994 (it is still in operation to this day).

Upon relocating to New Mexico, she changed the focus of her artwork to fiber, taking it full time in 2004. Her manufacturing background has led to constant experimentation with new materials and techniques that fuel her work. The classic fractal structures of the sub-microscopic world are a constant inspiration, as are natural processes, such as oxidation, replication and growth.



720 S. Husband Street  
405.744.2780  
[museum.okstate.edu](http://museum.okstate.edu)

